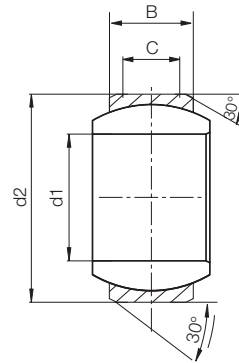


igubal® Pivoting Bearing - inch - KGLI



Special Properties

- housing made of igumid G
- spherical ball made of highly wear-resistant iglide® L280
- easy to install
- compensation for alignment errors
- universal corrosion resistance
- lightweight
- maintenance-free, self-lubricating



Load Data and Dimensions (inch)

Part No.	d1	d2	B	C	Maximum Angle of Pivot
	E10	Inch	Inch	Inch	
KGLI-03	.1900	.5625	.312	.218	34°
KGLI-04	.2500	.6562	.375	.250	30°
KGLI-05	.3125	.7500	.437	.281	29°
KGLI-06	.3750	.8125	.500	.312	25°
KGLI-07	.4375	.9375	.562	.343	25°
KGLI-08	.5000	1.0625	.625	.390	25°
KGLI-10	.6250	1.1875	.750	.500	23°
KGLI-12	.7500	1.4375	.875	.593	23°
KGLI-16	1.0000	2.1250	1.375	1.005	23°

Part No.	Maximum Static Compressive Strength		Maximum Torque for the assembly	Housing Bore		Shaft Size	
	radial	axial		Min	Max.	Min.	Max.
	lbs	lbs					
KGLI-03	225	34	3.69	.5625	.5630	.1888	.1900
KGLI-04	337	56	7.37	.6562	.6568	.2485	.2500
KGLI-05	450	79	8.85	.7500	.7509	.3110	.3125
KGLI-06	629	90	14.75	.8125	.8134	.3735	.3750
KGLI-07	843	101	22.13	.9375	.9382	.4358	.4375
KGLI-08	955	112	25.82	1.0625	1.0632	.4983	.5000
KGLI-10	1191	169	29.50	1.1875	1.1882	.6233	.6250
KGLI-12	1911	191	40.57	1.4375	1.4383	.7479	.7500
KGLI-16	3057	562	47.94	2.1250	2.1258	.9988	1.0000

► Tolerance Table, Page 1.14
 For housing bores (H7)
 For shaft sizes (h7)

igubal® Pivoting Bearing

KGLI

PDF: www.igus.com/pdf/igubal.asp
 Specs/CAD/RFQ: www.igus.com/igubal.asp
 RoHS info: www.igus.com/RoHS.asp



inch

mm